



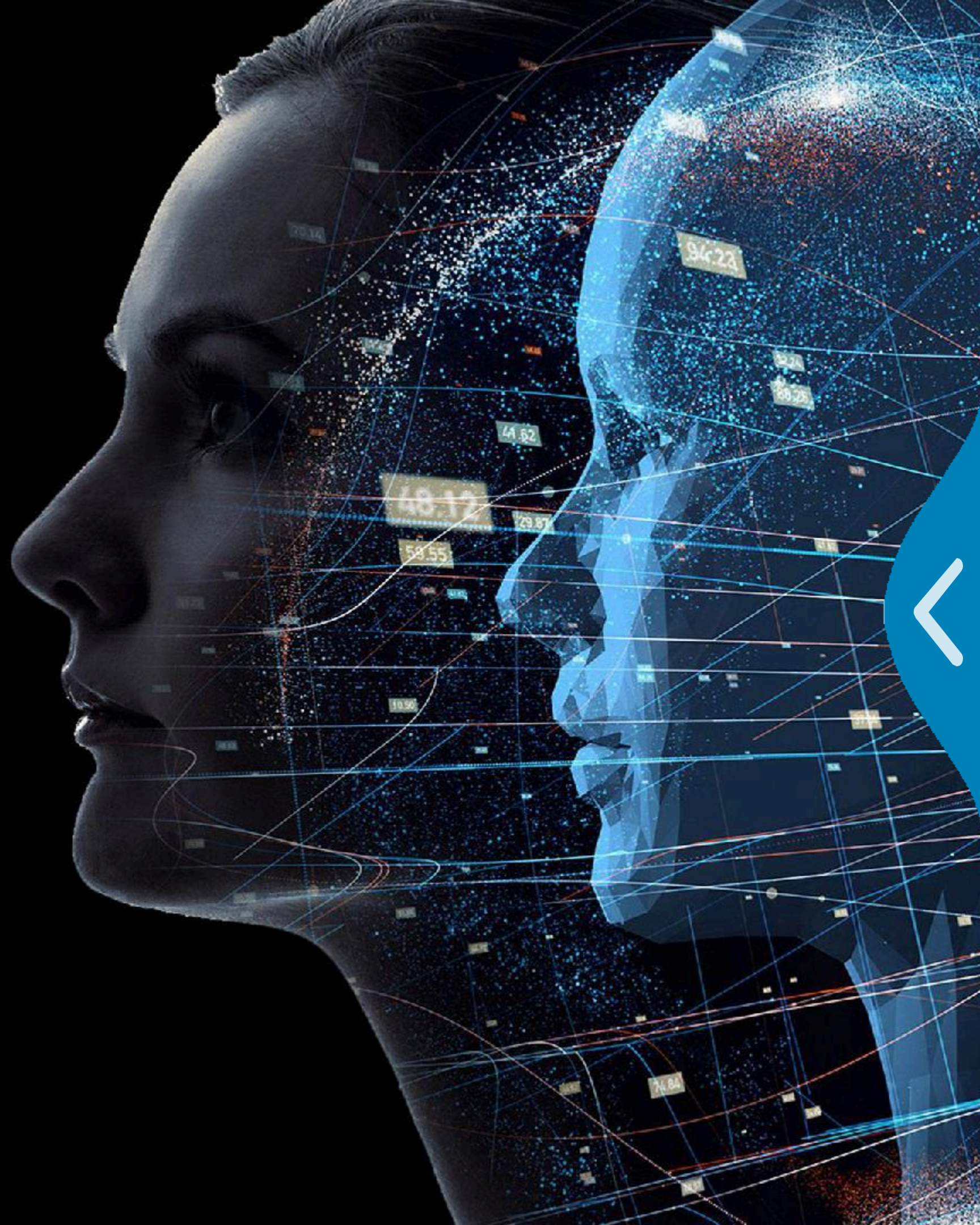
---

# **INNTRILABS SOFTWAREPRODUCT ENGINEERING!**

---

[www.inntrilabs.com](http://www.inntrilabs.com)





## **ABOUT INNTRI LABS**

Inntri LABS (Pvt) Ltd is a leading provider of software products and bespoke software solutions, dedicated to delivering customized and innovative digital solutions to companies around the globe. Over the past four years, we have collaborated with renowned clients, consistently delivering high-quality applications that set new standards in both quality and efficiency. Our mission is to support companies in achieving their business growth objectives through impactful and innovative software solutions.



# WHAT WE DO



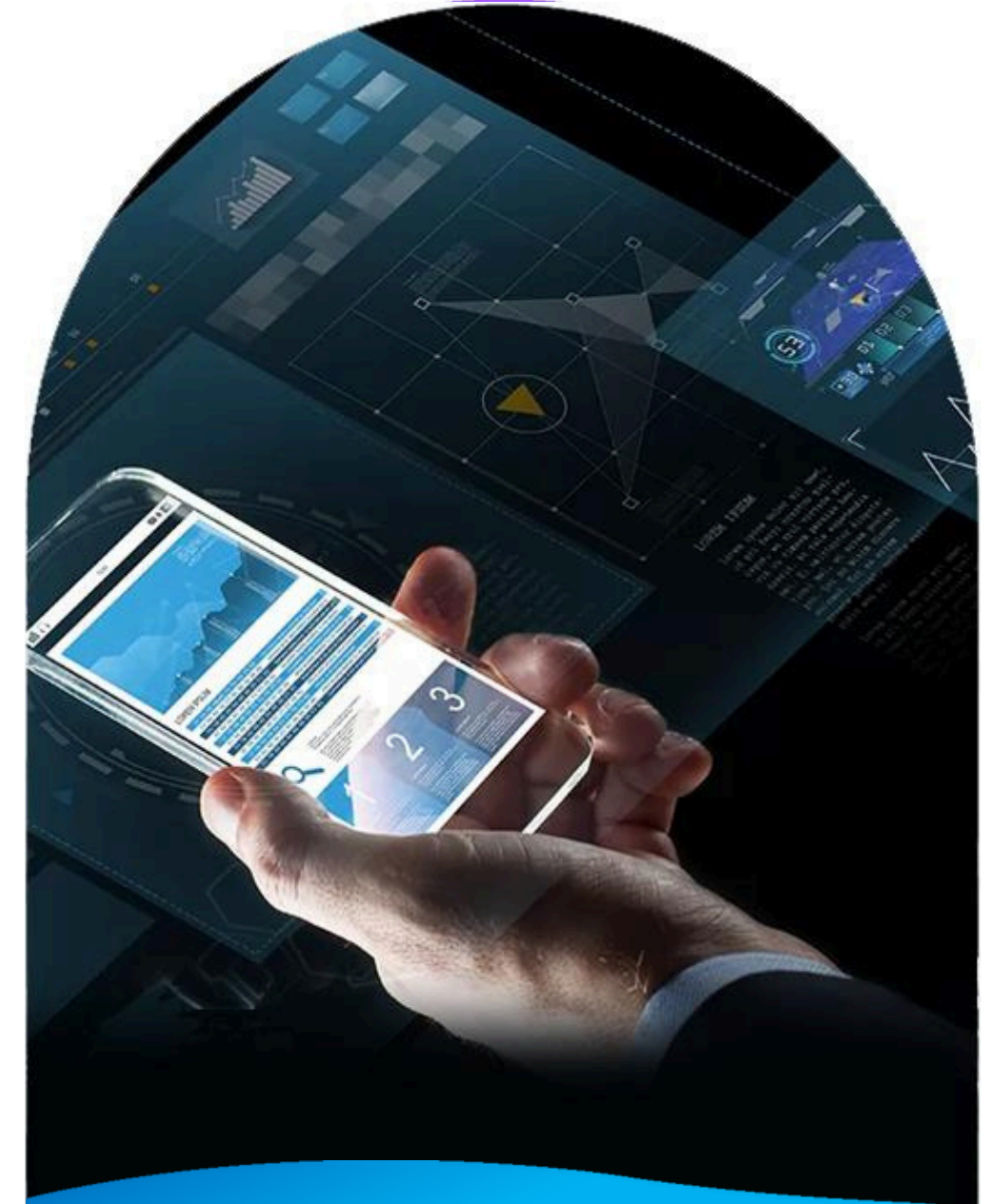
## ENTERPRISE SOLUTIONS

CUSTOM ERP  
Digitizing Business Processes



## WEB SOLUTIONS

DESIGN & DEVELOP  
Analyze, Design, Develop and  
Maintain



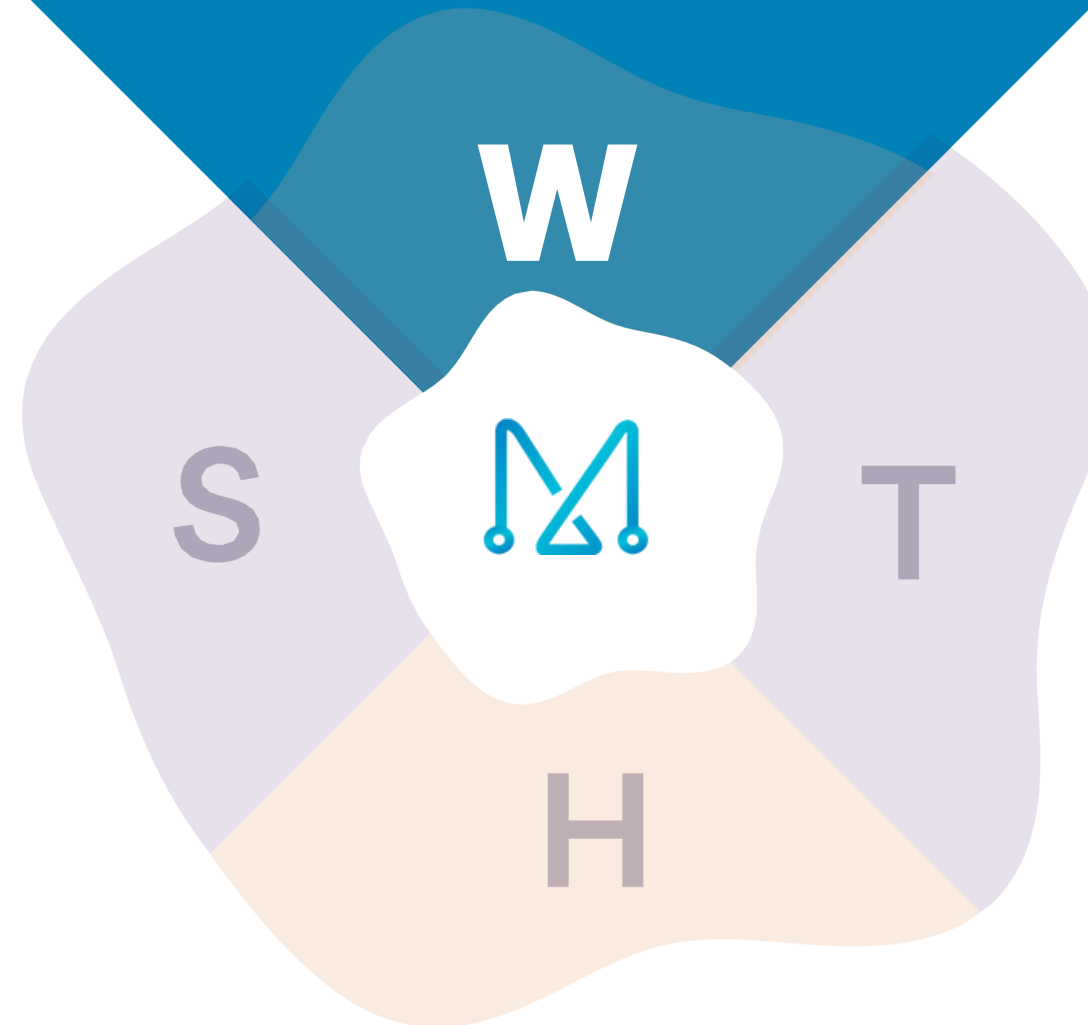
## MOBILE SOLUTIONS

ANDROID / IOS  
Native, Hybrid

# 01.

## Warehousing and Distribution

Warehousing and Distribution ensure efficient storage, management, and delivery of goods, optimizing supply chain operations and customer satisfaction.



### Shipping Management System (SMS)

A Shipping Management System(SMS) optimizes logistics by managing shipping operations, tracking shipments, reducing costs, and ensuring timely deliveries.

### Transportation Management System

A Transport Management System optimizes logistics by managing fleet operations, tracking shipments, and enhancing efficiency and cost-effectiveness in transportation.

### Human Resource Management System (HRMS)

A Human Resource Management System streamlines employee management, automates payroll, tracks performance, and enhances recruitment and compliance processes.

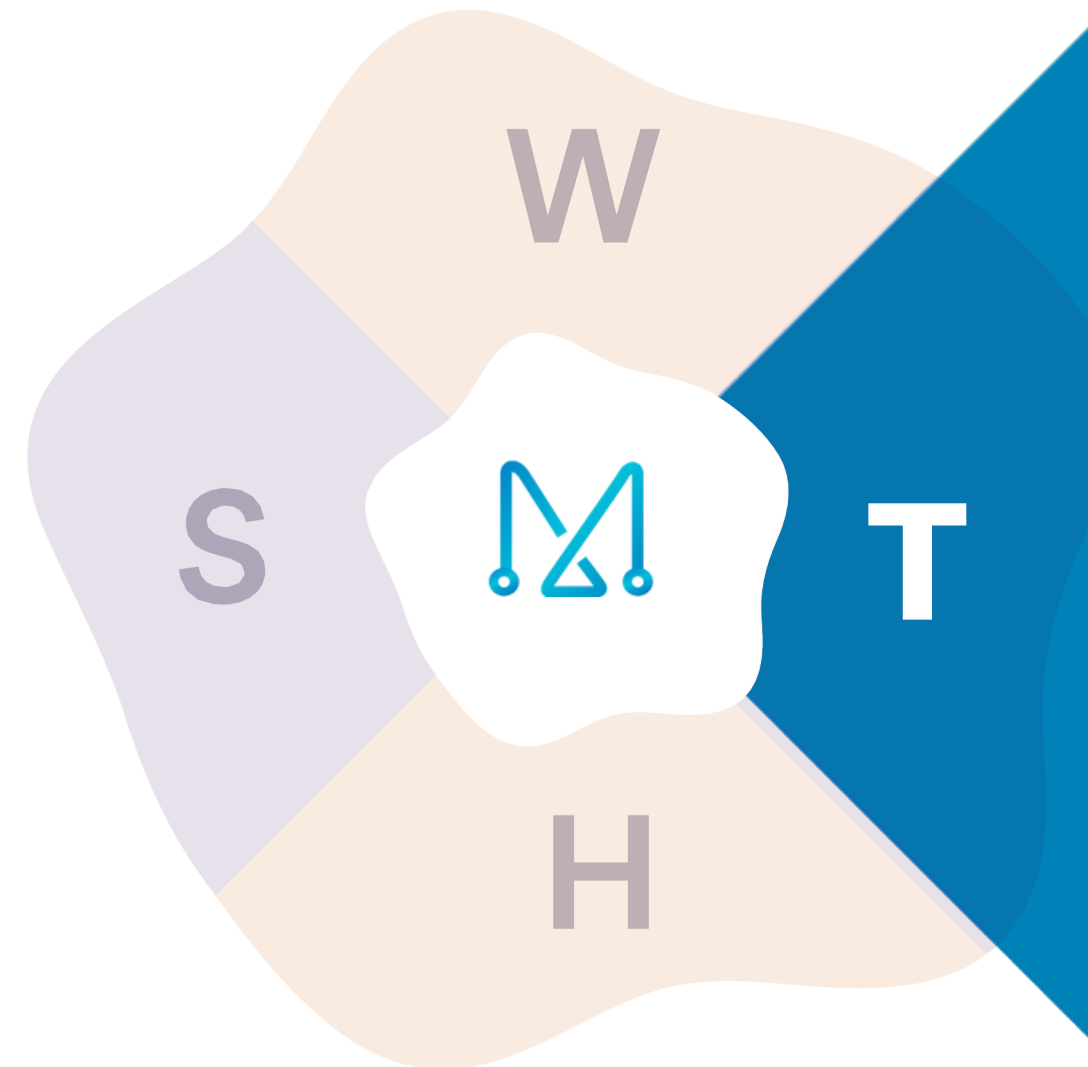


## Shipping Management System (SMS)

A Shipping Management System (SMS) optimizes logistics by managing shipping operations, tracking shipments, reducing costs, and ensuring timely deliveries.

## Warehousing and Distribution

Warehousing and Distribution ensure efficient storage management and delivery of goods optimizing supply chain operations and customer satisfaction.



## Human Resource Management System (HRMS)

A Human Resource Management System streamlines employee management, automates payroll, tracks performance, and enhances recruitment and compliance processes.

# 02.

## Transportation Management System

A Transport Management System optimizes logistics by managing fleet operations, tracking shipments, and enhancing efficiency and cost-effectiveness in transportation.



## Warehousing and Distribution

Warehousing and Distribution ensure efficient storage, management, and delivery of goods, optimizing supply chain operations and customer satisfaction.

## Transportation Management System

A Transport Management System optimizes logistics by managing fleet operations, tracking shipments, and enhancing efficiency and cost-effectiveness in transportation.

## Shipping Management System (SMS)

A Shipping Management System (SMS) optimizes logistics by managing shipping operations, tracking shipments, reducing costs, and ensuring timely deliveries.

## Human Resource Management System (HRMS)

A Human Resource Management System streamlines employee management, automates payroll, tracks performance, and enhances recruitment and compliance processes.

03.



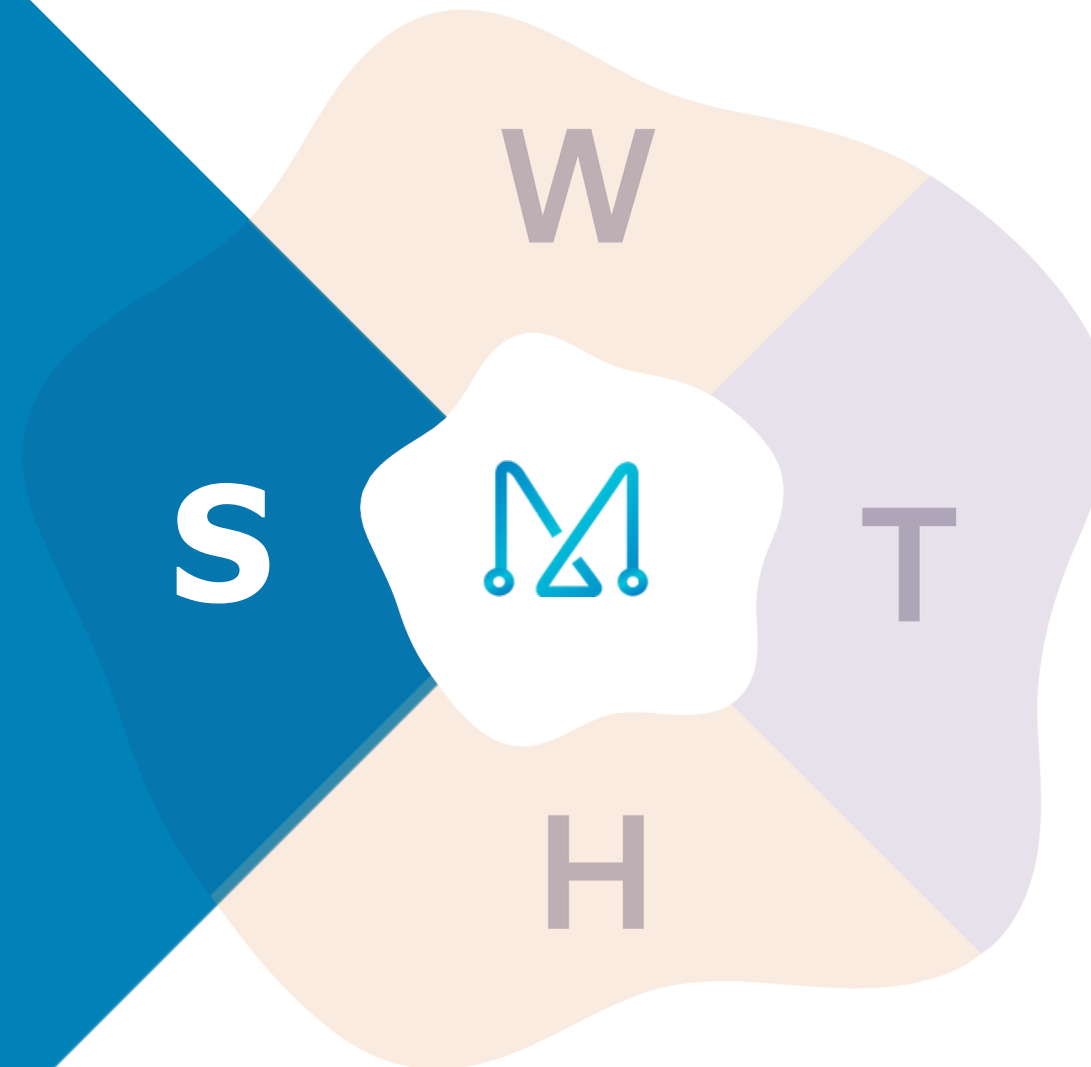
04.

## Shipping Management System (SMS)

A Shipping Management System(SMS) optimizes logistics by managing shipping operations, tracking shipments, reducing costs, and ensuring timely deliveries.

## Warehousing and Distribution

Warehousing and Distribution ensure efficient storage, management, and delivery of goods, optimizing supply chain operations and customer satisfaction.



## Human Resource Management System (HRMS)

A Human Resource Management System streamlines employee management, automates payroll, tracks performance, and enhances recruitment and compliance processes.

## Transportation Management System

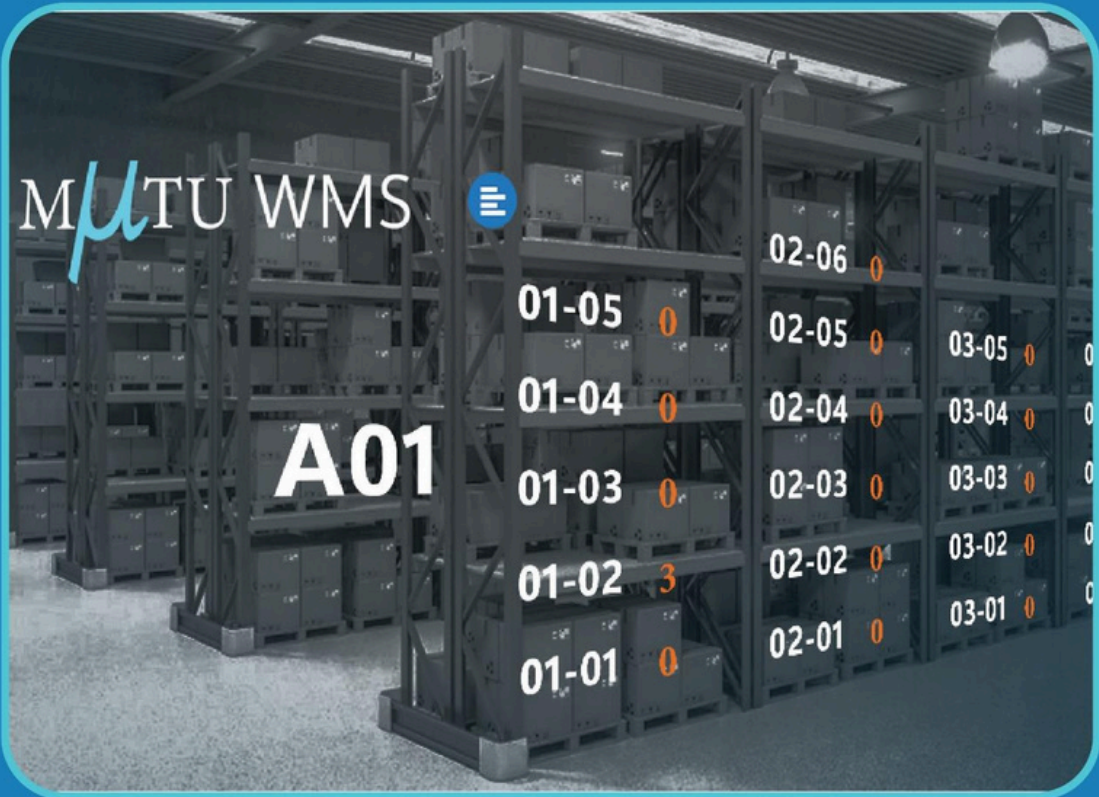
A Transport Management System optimizes logistics by managing fleet operations, tracking shipments, and enhancing efficiency and cost- effectiveness in transportation.



# WAREHOUSE

Stacking Item with

**2** **Non-Human**  
Validation Point!



1. Open
2. Update details
3. Barcoding
4. Validating
5. Bin movement
6. Complete ✓



**Fast Moving  
Items  
Identify And Rearrange  
Bins On The Moment**



**Stay Informed  
At Every Step With Real-  
Time Notifications**

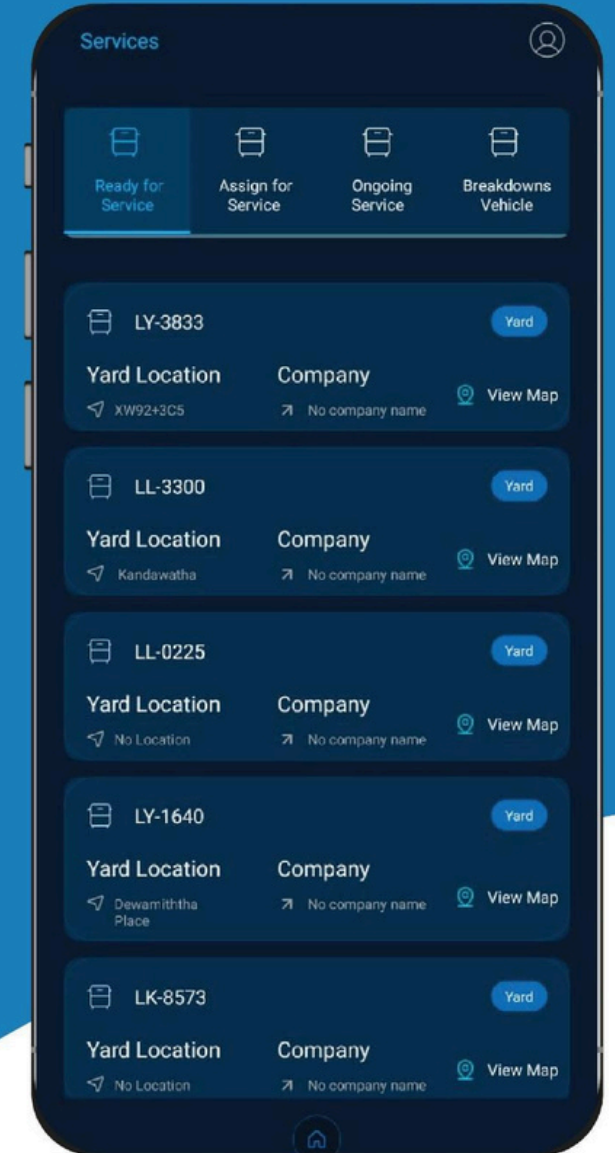


# TRANSPORT SYSTEM

Track Vehicle Health  
Through an Auto-  
Scheduled Process



Job Invoicing and  
Monitoring Process



Empowering drivers to efficiently  
manage hire and vehicle status.

Providing customers with  
complete visibility for a seamless  
experience.



# HR MANAGEMENT SYSTEM

The screenshot displays the MPTU HRIS system interface. On the left is a sidebar menu with categories: GENERAL (Dashboard), EMPLOYEE MANAGEMENT (Employees), LEAVE MANAGEMENT (Leave Request), and ADMIN MANAGEMENT (Roster, Invite Employee, Reverse Leave, Resign Employee, Job Profile, Tax Types, Leave Types, Departments, Teams, Approvers, Cost Center, Roles, Uploads, Attendance workflow, Employee Location). The main content area is divided into four panels:

- Leave Entitlement:** Shows entitlement and balance for Short Leave (24/6), Annual (14/5), and Casual (7/0).
- Leave Calendar:** A calendar view for December 2024 and January 2025, with tabs for Current, Leave, and Holiday. The 10th of December is highlighted.
- Leave Widgets:** Summary cards for Annual (0/9/0), Short Leave (0/18/0), and Casual (0/7/0) leave types.
- Things to Do:** A table of pending leave requests for Sumal, filtered by Casual leave. The table shows two requests for full-day leave on 2024-12-12 and 2024-12-13. Below the table are buttons for 'Approve' and 'Rejected'.

© 2024, dev. Inntrilabs

- Employee Management
- Attendance and Leave Management
- Payroll Management
- Reporting and Analytics



## Quiz Master



- Quiz and Participant Management
- Real-Time Question Pushing and Monitoring
- Automated Grading and Feedback
- Multi-Language Support

## Cloud-Based Laundry Management System



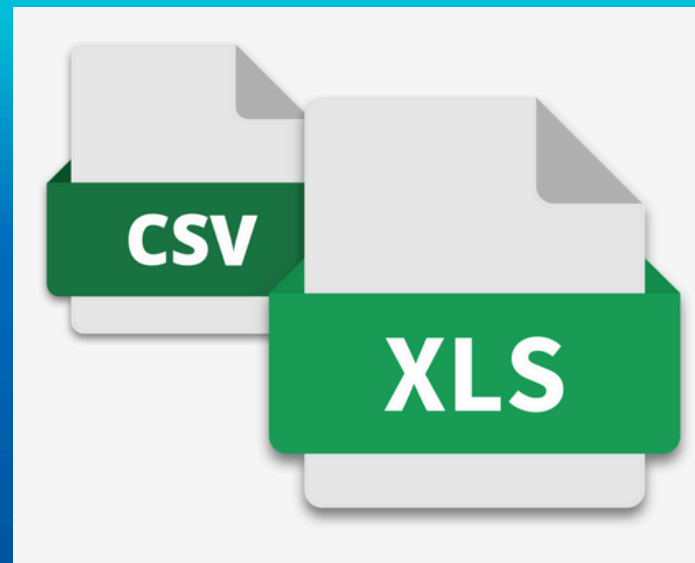
- Customer and Order Management
- Inventory Management
- Payment Processing
- Mobile and Web App Integration

# INTEGRATIONS TO OTHER SYSTEMS



{JSON}

API in JSON  
FORMAT



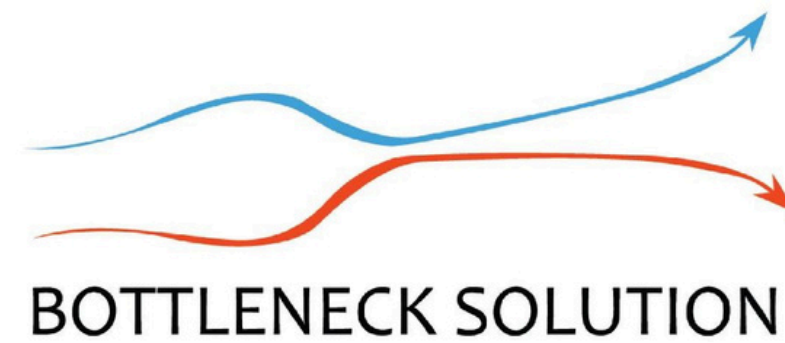
CSV or EXCEL  
FILE UPLOAD



PULL DATA from  
API GIVEN BY  
CLIENT



# Our Client



# THANK YOU

Your engagement and feedback are greatly appreciated.

Looking forward to future discussions.

**Inntri Labs (Pvt) Ltd**  
**No102/3, SrimathAnagarika**  
**DharmapalaMawatha, Colombo07**  
**Sri Lanka.**

 **+9477787 8746**

 **[www.inntrilabs.com](http://www.inntrilabs.com)**  
 **[info@inntrilabs.com](mailto:info@inntrilabs.com)**